

We Believe that Family Members are “Experts” in the Autism Spectrum Discovery Process

And that's what makes The Discovery Series so unique. These courses are presented by staff and caregivers who belong to **The Autism Society of Minnesota**. These small-group courses allow participants to meet a variety of family members who share practical ideas and insights on living with and guiding individuals on the autism spectrum.

The goals of the course are to:

- Understand how autism spectrum disorders impact parenting during adolescence
- Learn strategies for developing independence
- Provide guidance to parents for transition planning
- Offer insight into the concerns and challenges facing adolescents with ASD

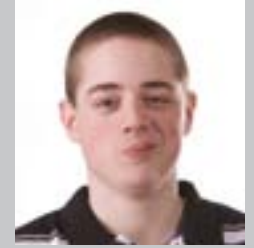
All Discovery Series are available for school districts & organizations as single-day or four-part presentations.



ausmTM
autism society of minnesota
2380 Wycliff Street
Suite 102
St. Paul, MN 55114

Non-Profit Org.
U.S. Postage
PAID
Twin Cities, MN
Permit No. 1062

Embracing Adolescence & Adults on the Spetrum



The Discovery Series

*Courses Designed for Family
Members of Individuals with Autism
Spectrum Disorder*

ausm[®]
autism society of minnesota

2380 Wycliff Street, Suite 102
St. Paul, MN 55114
651.647.1083
www.ausm.org

This Discovery Series is designed specifically for family members of adolescents and adults on the autism spectrum. Each course focuses on the unique joys and challenges experienced during these stages of life. The goals of these courses include: explore the ways ASD impacts adolescence and adulthood, learn strategies for successful independence, support social skills in all settings, including work, issues around sexuality, provide guidance for adult life and learn new behavior management strategies. **Adult series is designed for those recently diagnosed with ASD, their families and/or caregivers.**

Time and Place

The Discovery Series will be offered on the following dates in 2012. Register well in advance, for class size is limited. **Classes will be held at the AuSM office.** Confirmation will be sent.

Adolescence in 2012

March 10, 9:00 am to 4:00 pm
 October 6, 9:00 am to 4:00 pm

Adults in 2012

May 10, 7:00 to 9:30 pm
 November 8, 7:00 to 9:30 pm



Take home a binder on these topics for future reference.

Topics

- Impact of autism spectrum disorder on adolescents and adults
- Developing independence in daily living skills
- Developing independence in hygiene
- Understanding social skills across settings including work
- Developing reciprocal relationships
- Sexuality and sexual issues
- Privacy and safety
- Learning about transitions into adult living and workplace issues
- Developing self-determination skills
- Behavior management strategies
- Dealing with emotions and letting go
- Parenting issues as an adult with ASD
- **Topics are tailored to needs of each group.**

Cost

Embracing Adolescence: \$40 (member rate)/ \$65 for non-members.

Adults on the Spectrum: \$20 (all)

Fees cover two family members. Singles are encouraged to bring a friend or grandparent. Special reduced rates are available for those unable to pay the entire fee. Call 651.647.1083.

Register online at www.ausm.org.

Send registration form plus fee to:

ausm[®] 2380 Wycliff St., Ste. 102
 St. Paul, MN 55114
 F: 651.642.1230
 info@ausm.org
autism society of minnesota

Registration Form

Date attending: _____

Name: _____

2nd Attendee: _____ Member# _____

Address: _____

City: _____ State: _____ Zip: _____

Daytime phone: _____

E-mail: _____

Payment Information:

Check enclosed Check # _____

VISA MC Discover

Card# _____

Exp. Date _____ Signature _____